

**PLANT
MORE
PLANTS**

Border Raingarden



ELEVATION
TREE AND SHRUBS BORDER

0 3'
Scale: 3/16" = 1'-0"



PLANT MORE PLANTS

Border Raingarden



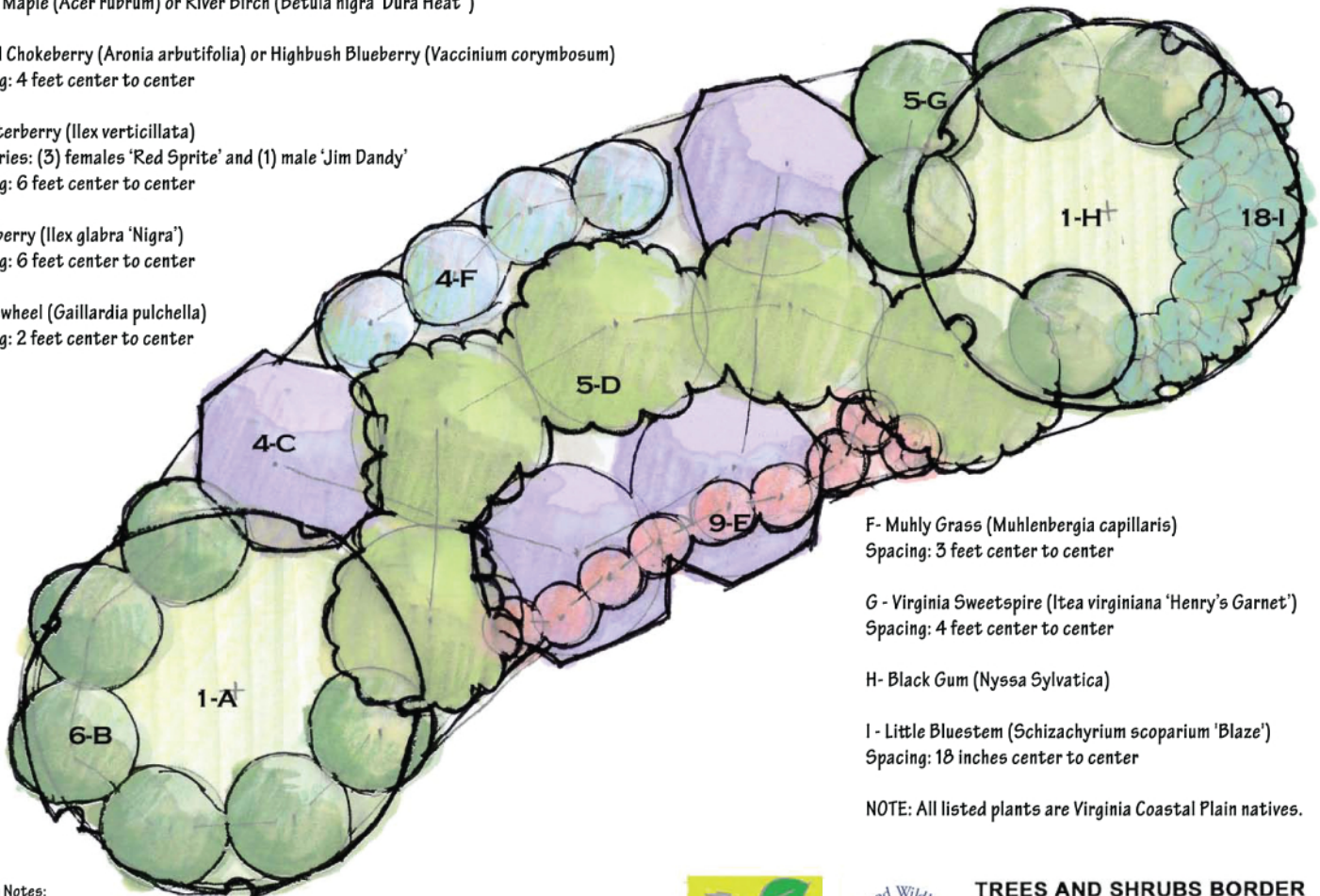
A- Red Maple (*Acer rubrum*) or River Birch (*Betula nigra* 'Dura Heat')

B - Red Chokeberry (*Aronia arbutifolia*) or Highbush Blueberry (*Vaccinium corymbosum*)
Spacing: 4 feet center to center

C - Winterberry (*Ilex verticillata*)
for berries: (3) females 'Red Sprite' and (1) male 'Jim Dandy'
Spacing: 6 feet center to center

D- Inkberry (*Ilex glabra* 'Nigra')
Spacing: 6 feet center to center

E - Firewheel (*Gaillardia pulchella*)
Spacing: 2 feet center to center



F - Muhly Grass (*Muhlenbergia capillaris*)
Spacing: 3 feet center to center

G - Virginia Sweetspire (*Itea virginiana* 'Henry's Garnet')
Spacing: 4 feet center to center

H - Black Gum (*Nyssa Sylvatica*)

I - Little Bluestem (*Schizachyrium scoparium* 'Blaze')
Spacing: 18 inches center to center

NOTE: All listed plants are Virginia Coastal Plain natives.

Planting Notes:

- Dig planting holes 2 times wider than plant rootball and deep enough only to cover top of root ball. Backfill soil should not contact trunk of plant.
- Amend planting bed to 6 inch depth or backfill holes using topsoil mixed with compost. Heavy clay and compacted soil requires more compost.
- Thoroughly water-in each plant while backfilling and after planted. Water new plantings every other day for first three weeks to get them established



The Low Impact
Development Center, Inc.

Adapted for homeowner use by BioForm



TREES AND SHRUBS BORDER 550 SF

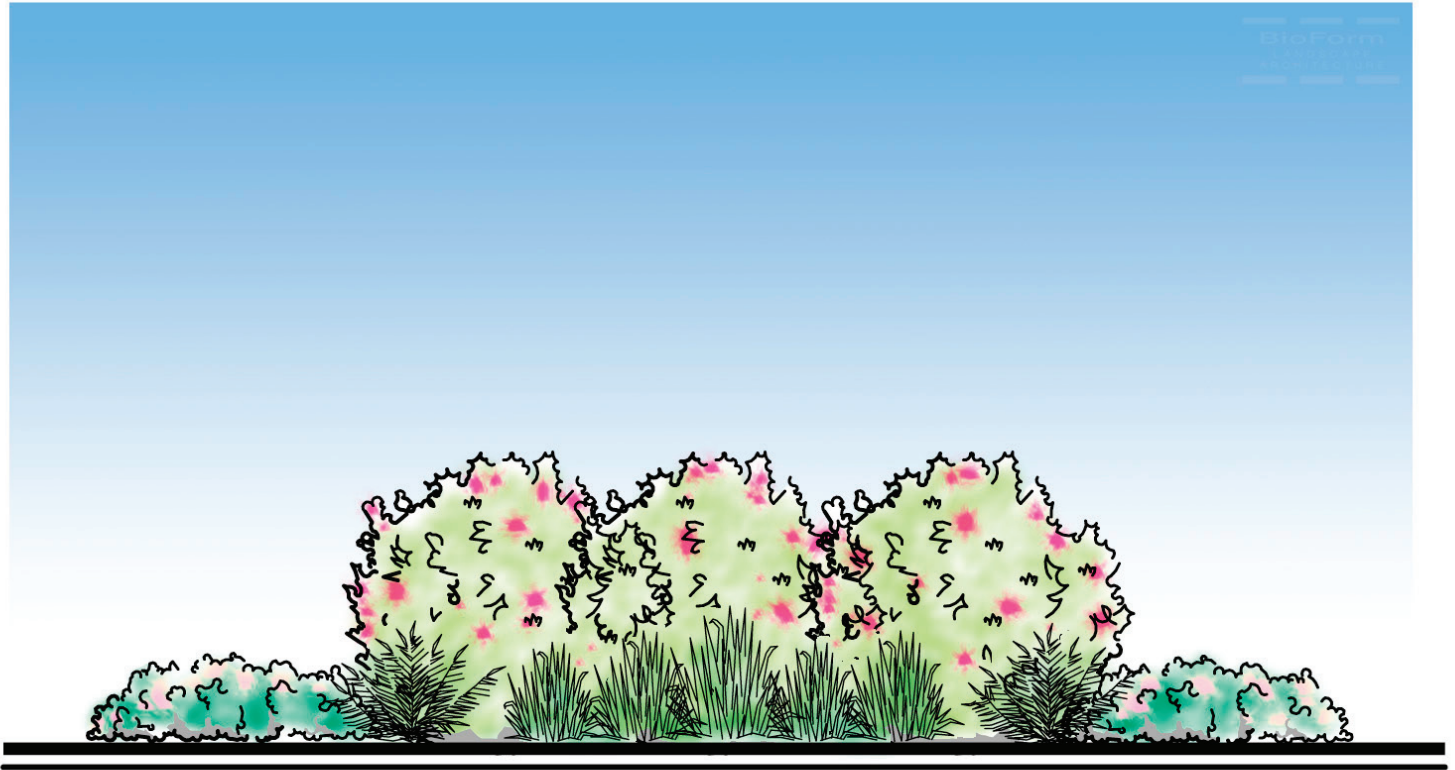
Full Sun
Zones 5b-7b
Coastal
Scale: 1/4" = 1'



PLANT
MORE
PLANTS

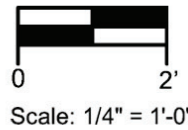


Entry Raingarden



ELEVATION

ENTRY GARDEN



PLANT MORE PLANTS

Entry Raingarden

A - Dwarf Mountain Laurel (*Kalmia latifolia* 'Elf' or 'Tiddlywinks')
or Sweetspire (*Itea virginica* 'Little Henry')
Spacing: 3 feet center to center

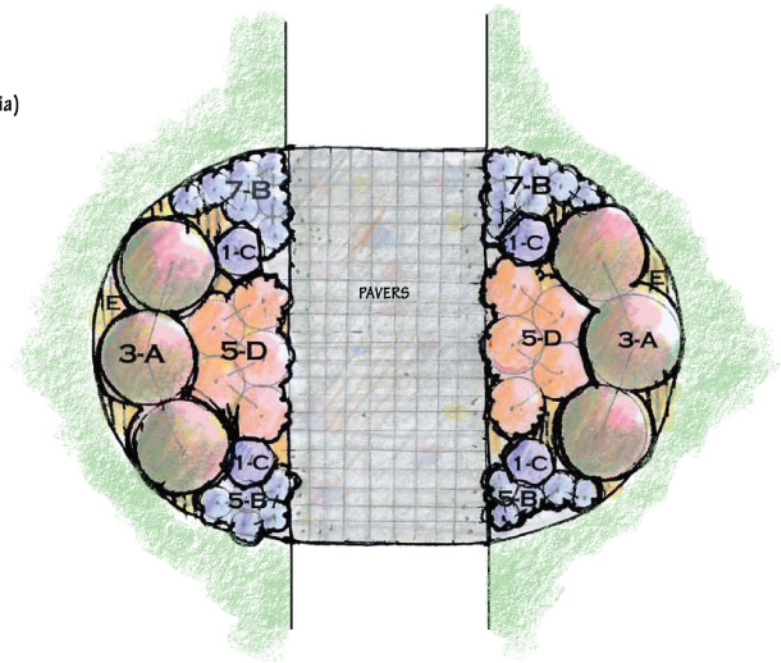
B - Wild Ginger (*Asarum canadense*) or Foamflower (*Tiarella cordifolia*)
Spacing: 12 inches center to center

C - Christmas Fern (*Polystichum acrostichoides*)

D - Heuchera (*Heuchera Americana*)
or Narrowleaf Sedge (*Carex amphiloba*)
Spacing: 2 feet center to center

E - Pennsylvania Sedge (*Carex pennsylvanica*)
or Green and Gold (*Chrysogonum virginianum*)
Spacing: 12 inches center to center

NOTE: All listed plants are Virginia Coastal Plain natives.



Planting Notes:

- Dig planting holes 2 times wider than plant rootball and deep enough only to cover top of root ball. Backfill soil should not contact trunk of plant.
- Amend planting bed to 6 inch depth or backfill holes using topsoil mixed with compost. Heavy clay and compacted soil requires more compost.
- Thoroughly water-in each plant while backfilling and after planted. Water new plantings every other day for first three weeks to get them established.



The Low Impact
Development Center, Inc.

Adapted for homeowner use by BioForm

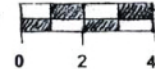


ENTRY GARDEN FLANKING WALK WITH PERMEABLE PAVERS 113 SF GARDEN, 72 SF PAVERS

Coastal Plain
Pt Shade-Shade

Zones: All

Scale: 1/4"=1'



**PLANT
MORE
PLANTS**



Hedgerow Raingarden



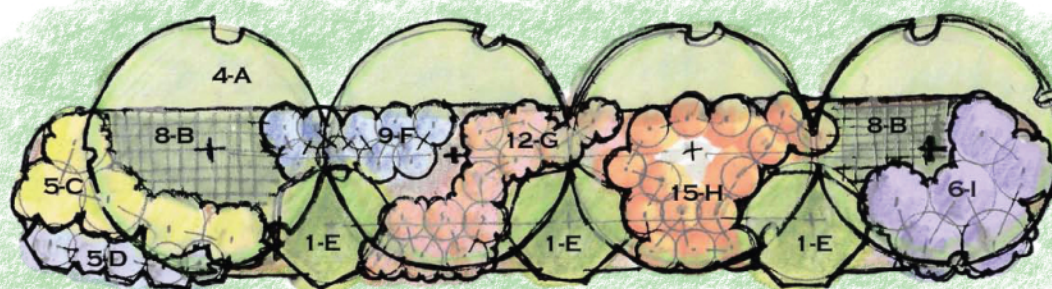
ELEVATION
HEDGEROW PLANTING

0
Scale: 1/4" = 1'-0"



PLANT MORE PLANTS

Hedgerow Raingarden



A - Sweetbay Magnolia (*Magnolia virginiana*) OR Red Maple (*Acer Rubrum*)
Spacing: 18 feet center to center

B - Male Fern (*Dryopteris filix-mas*) OR Wintergreen (*Gaultheria procumbens*)
Spacing: 2 feet center to center

C - Mapleleaf Viburnum (*Viburnum acerifolium*)
Spacing: 3 feet center to center

D - Virginia Sweetspire (*Itea virginiana* 'Henry's Garnet')
Spacing: 3 feet center to center

E - Fringe tree (*Chionanthus virginicus*) or Serviceberry (*Amelanchier canadensis*)
Spacing: 18 feet center to center

F - Highbush Blueberry (*Vaccinium corymbosum*)
Spacing: 5 feet center to center

G - Summersweet Clethra (*Clethra alnifolia* 'Ruby Spice')
Spacing: 3 feet center to center

H - Dwarf Fothergilla (*Fothergilla gardenii*)
Spacing: 4 feet center to center

I - Oakleaf Hydrangea (*Hydrangea quercifolia*) OR (*Hydrangea arborescens*)
Spacing: 5 feet center to center

NOTE: All listed plants are Virginia Piedmont natives

Planting Notes:

- Dig planting holes 2 times wider than plant rootball and deep enough only to cover top of root ball. Backfill soil should not contact trunk of plant.
- Amend planting bed to 6 inch depth or backfill holes using topsoil mixed with compost. Heavy clay and compacted soil requires more compost.
- Thoroughly water-in each plant while backfilling and after planted. Water new plantings every other day for first three weeks to get them established.

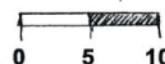


HEDGEROW PLANTING

903 SF

Scale: 1"=10'

Piedmont
Pt Shade-Shade
All zones



Adapted for homeowner use by BioForm